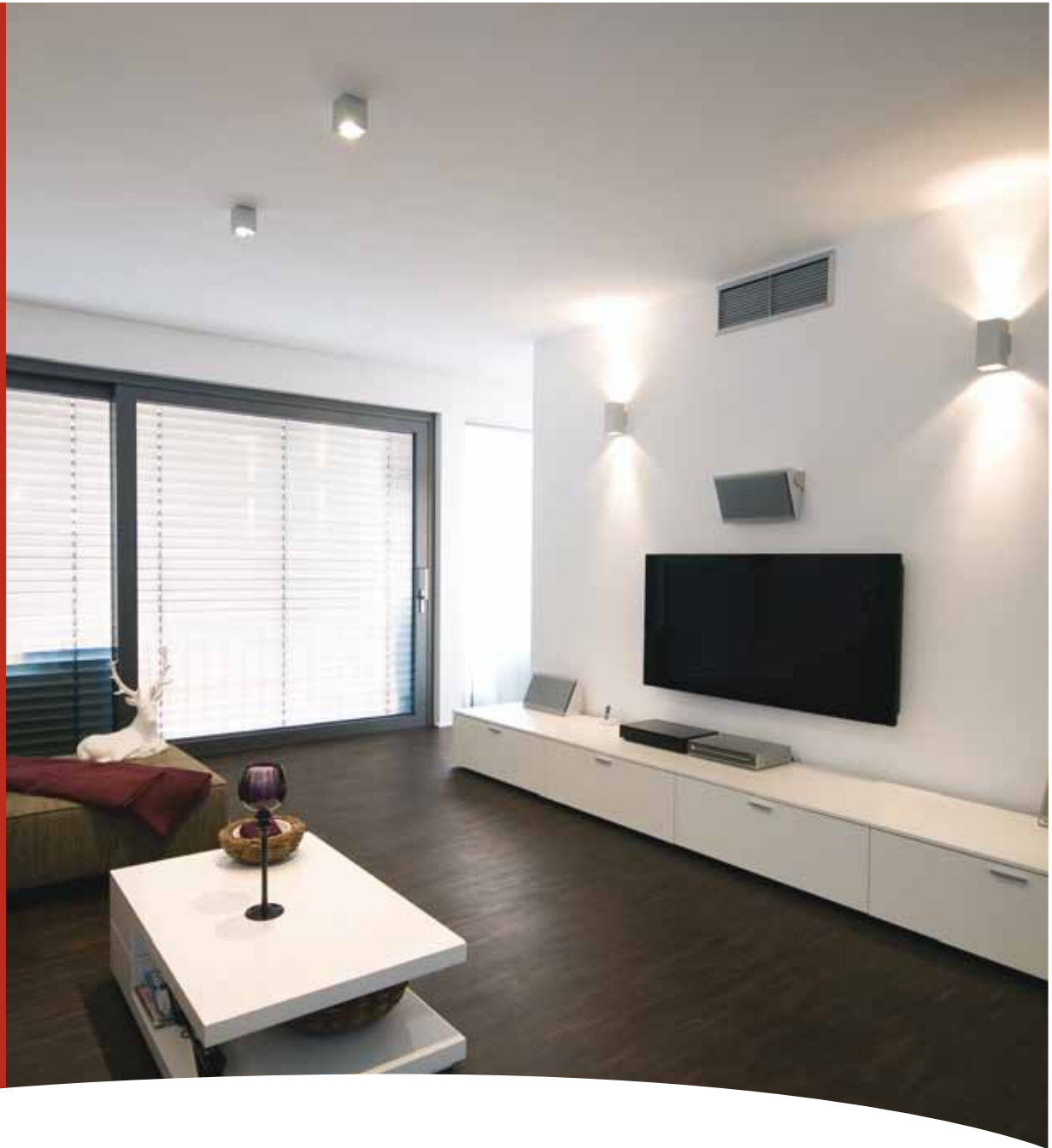
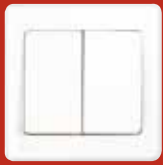


ECORE



White Wiring Devices

High Quality. Stylish Design. Value for Money.



ECORE from MK Electric is a new line of high quality wiring devices that is engineered to be value for money while staying true to MK Electric's hallmark of unparalleled safety in terms of features. It's stylish, modern and able to compliment any interior design. Ecore inherits the following merits:

1. Unique screw cap design

- It is monobloc design that provides flexibility in installation with its unique screw cap that is attached to its front plate.
- Re-usable and retained screw caps, fixing screws are not visible.

2. Stylish and modern design

- Curved edges - slim profile, reduces ledge space prevents dust collection.
- Rounded corners.

3. Manufactured from high quality materials

- Made of durable high quality polycarbonate plastic for high impact.
- Is available in basic essential white.

4. Ease of Installation

- Clearly marked terminals.
- Slotted holes - allows for alignment where back boxes are not straight.

5. Product compliances with relevant BS/IEC standards

- Ecore the ideal choice for residential and replacement market.



It is possible to open and close the screw caps even with two or more Ecore wiring devices mounted next to each other.

Wiring Devices | White

SWITCHES



E8870WHI
1 gang 10AX SP
1 way switch



E8871WHI
1 gang 10AX SP
2 way switch



E8872W1WHI
2 gang 10AX SP
1 way switch



E8872WHI
2 gang 10AX SP
2 way switch



E8873MW1WHI
3 gang 10AX SP
1 way switch



E8873MWHI
3 gang 10AX SP
2 way switch



E8874W1WHI
4 gang 10AX SP
1 way switch



E8874WHI
4 gang 10AX SP
2 way switch



E8878PWHI
1 gang 10A SP 1 way
push switch
'Marked PRESS'



E8878BWHI
1 gang 10A SP 1 way
push switch
with 'BELL' symbol



E8879WHI
1 gang 10AX
Intermediate switch



E8423WHWHI
1 gang 20AX DP switch
with neon marked
'WATER HEATER'



E88423WHI
1 gang 20AX DP switch
with neon

WIDE ROCKER SWITCHES



E4781W1WHI
1 gang 10AX 1 way
Wide Rocker
SP Switch



E4781WHI
1 gang 10AX 2 way
Wide Rocker
SP Switch



E4782W1WHI
2 gang 10AX 1 way
Wide Rocker
SP Switch



E4782WHI
2 gang 10AX 2 way
Wide Rocker
SP Switch



E4783W1WHI
3 gang 10AX 1 way
Wide Rocker
SP Switch



E4783WHI
3 gang 10AX 2 way
Wide Rocker
SP Switch

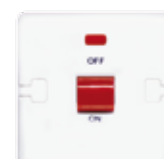


E4778BWHI
1 gang 10A Wide Rocker
push switch
with 'BELL' symbol



E4787NWHWHI
1 gang 20AX Wide Rocker
DP Switch with NEON
marked "WATER HEATER"

32A & 45A DP SWITCHES



E5105WHI
32A DP
Switch with NEON



E5215WHI
45A DP
Switch with NEON



E5215CKWHI
45A DP Switch with NEON
marked "COOKER"

Wiring Devices | White

DIMMER/FAN SPEED CONTROLLER



E8501WHI
1 gang 500VA dimmer with
10AX 2 way plate switch
(Non EMC)



E8601WHI
200VA fan speed regulator
(non EMC)

SOCKET OUTLETS



E2757WHI
1 gang 13A SP switched
socket outlet



E2747WHI
2 gang 13A SP switched
socket outlet



E780WHI
1 gang 13A unswitched
socket outlet



E781WHI
2 gang 13A unswitched
socket outlet



E2657WHI
1 gang 13A SP switch socket
outlet with NEON



E2647WHI
2 gang 13A SP switch socket
outlet with NEON



E2893WHI
1 gang 15A SP switched
socket outlet



E8155WHI
1 gang 16A switched
2 pin universal socket



E4151WHI
1 gang 16A schuko socket

CONNECTION UNITS



E1070WHI
13A switched fused connection
unit with front flex outlet & neon



E1072WHI
13A switched fused connection
unit with front flex outlet



E1090WHI
25A connection unit
with flex outlet



E1091WHI
13A unswitched fused connection
unit with front flex outlet

VOICE/TV OUTLETS



E3520WHI
1 gang TV non-isolated
outlet



E4817WHI
1 gang RJ11
American type



E3522WHI
1 gang TV/FM
Dual outlet



E422WHI
1 gang BT
Master



E427WHI
1 gang BT
secondary

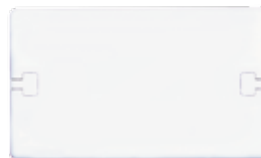
ANCILLIARIES



E701WHI
Share Socket Outlet
Input 240V, 50/60Hz
output 230/115V



E3827WHI
1 gang Blank Plate



E3828WHI
2 gang Blank Plate



E5450WHI
1M Euro Front Plate



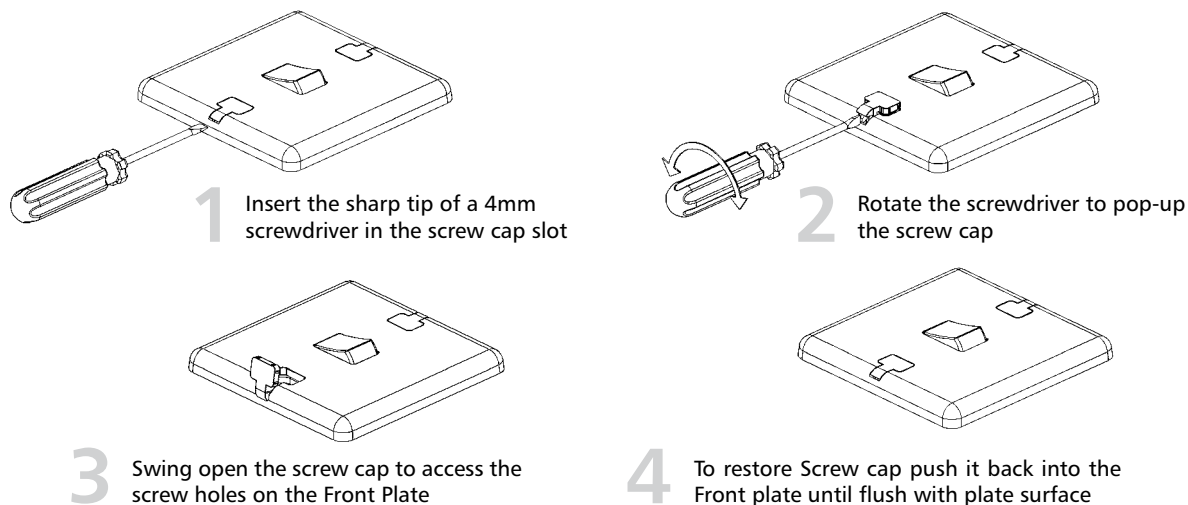
E5451WHI
2M Euro Front Plate

CONFORM TO INTERNATIONAL STANDARDS

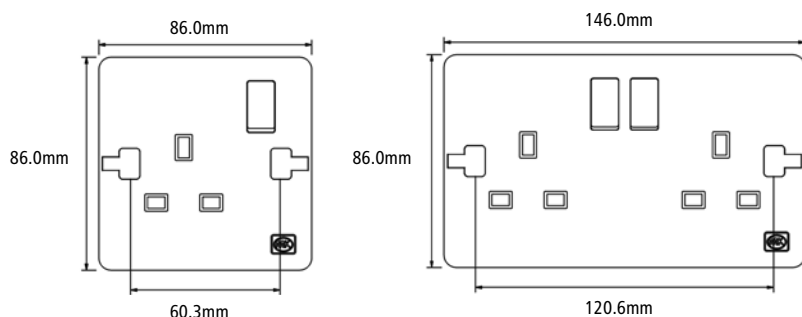
The products are manufactured in an ISO 9001 environment and comply to British/IEC.

	British Standard/IEC
10A SP 1 Way /10AX SP 1 Way & 2 Way Switches	IEC/BSEN 60669
20AX DP Switches	IEC/BSEN 60669
13A SP Switched & Unswitched Sockets	BS 1363
15A SP Switched Socket	BS 546
13A Switched & Unswitched Fused Connection	BS 1363
Shaver Supply Unit 115V/230V Output	IEC/BSEN 61558
25A Connection Unit	BS 5733
Data Communication Outlets	BS 5733
16A SP Switched 2 Pin Universal Socket	BS 5733
RJ 11 American Type Telephone Socket (4 Wire)	-
16A Schuko Socket	IEC 60884
500VA Dimmer	IEC 60669 (Non-EMC)
Fan Speed Controller	IEC 60669 (Non-EMC)

SCREW CAP INSTALLATION GUIDE



PRODUCT DIMENSIONS



HEAD OFFICE
HONEYWELL -
ELECTRICIAL DEVICES & SYSTEMS

The Arnold Centre, Paycocke Road
Basildon
Essex SS14 3EA UK
Telephone: +44 (0)1268 563000
Facsimile: +44 (0)1268 563405

Regional Office (Middle East)

Honeywell Middle East
Environmental & Combustion Controls
EMAAR Business Park, Building 2, Level 2 Office
201, Sheik Zayed Road
P.O.Box 232362, Dubai, UAE
Telephone: +971 4 450 5800
Facsimile: +971 4 450 5900

KSA Area Office

5th Floor, Taawonieh Northern Tower
P.O. Box 56106 Riyadh 11554, KSA
Telephone: +966 11 4346888 OR +966 11 4346817
Facsimile: +966 11 4346889

Jeddah Office

3rd Floor, L/G Building
Sitteen St. South to Bicycle Round
P.O. Box 8589, Jeddah 20492, KSA
Telephone: +966 2 617 8114/7
Facsimile: +966 2 617 8277

Qatar Area Office

P.O. Box 63757
Doha - Qatar
Telephone: +974 442 09075
Facsimile: +974 444 23970

Enquiries: mkenquiries.me@honeywell.com
www.mkelectric.com
www.honeywell.com

Registered Office: Honeywell House,
Arlington Business Park, Bracknell,
Berkshire, RG12 1EB
Registered No. 189291

MEMK06-0413a-EN

