



range introduction

Commando offers a comprehensive range of industrial plugs, connectors, socket outlets, appliance inlets, Combi and Modular-Combi units.

The Commando range is designed to meet all relevant European and British Standards, whilst offering an excellent choice of ingress protected ratings. The Commando range offers remarkable impact strength by way of its PBT (Polybutylene Terephthalate) or Nylon (Polyamide PA) insulated or aluminium housing*. Outstanding temperature performance and good resistance to most chemicals make it ideal for the most arduous applications. Contact pins and sleeves are of solid brass with stainless steel springs to keep contacts free of dirt and to ensure constant contact pressure.

features and benefits

Reliability

Features like the calibrated contact sleeves with stainless steel springs, brass screws in brass contacts, and the double earthing screws – all mean that this plug or socket will perform better and longer in difficult conditions

Ergonomic design

All edges and corners are rounded to remove sharp edges. Cable protection is improved. New design offers a better and more comfortable grip for connection / disconnection

Cable protection

The unified seal and cable protector forms a convex dome that prevents the plug from fastening on objects or collecting debris when dragged

Easy wiring

All screws are backed out and retained. Contact carrier marked front and back for easy and correct wiring. Hinged cable clamp and twin contact earth screws

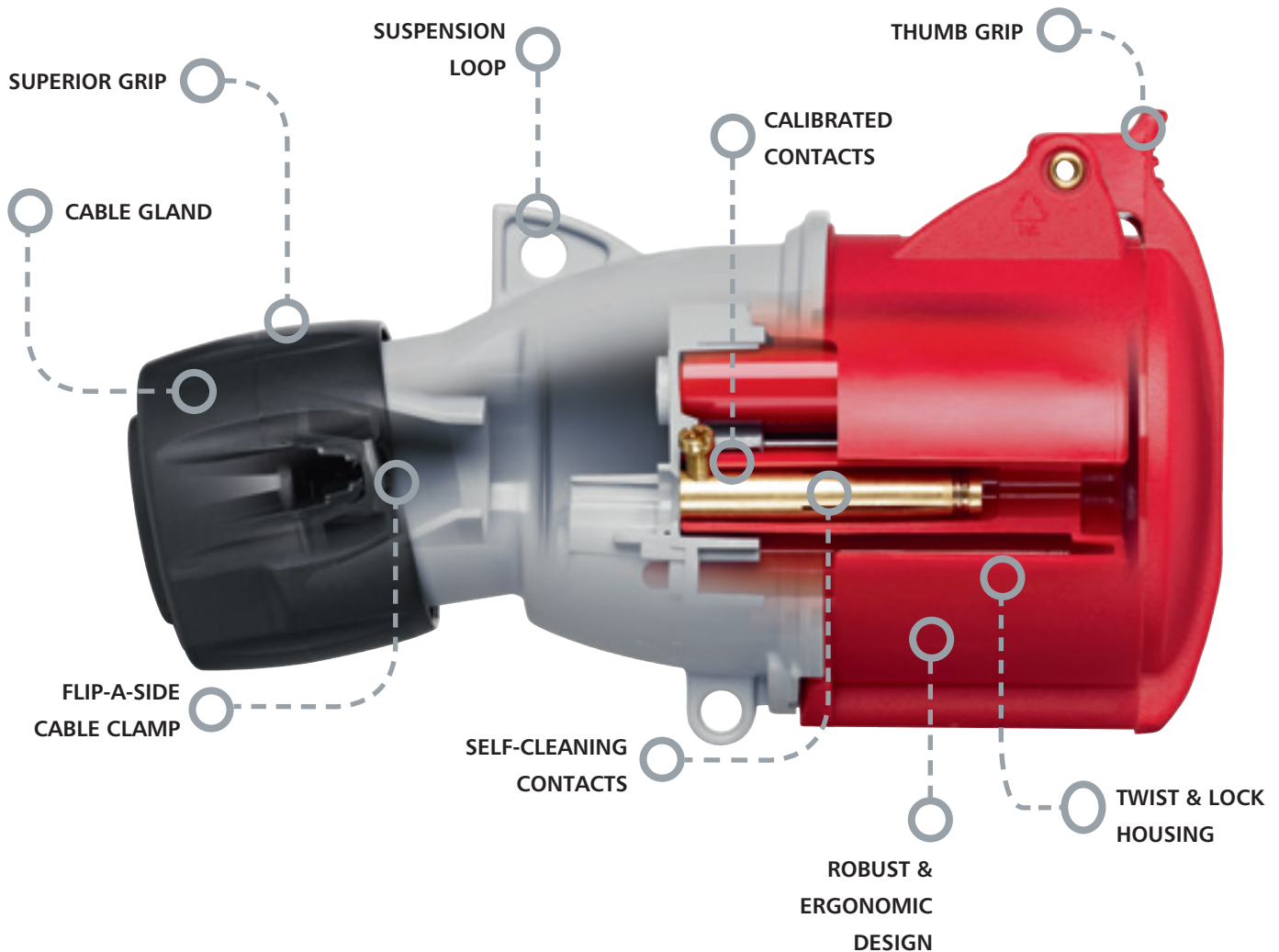
Outstanding Temperature Performance

Successful operation guaranteed between -25°C and 55°C

* 16A and 32A IP44 plug, connector and socket outlet products have housings manufactured from PA

technical hotline +44 (0)1268 563720

ingress protected | wiring devices



- **High Quality Materials**

The Commando range offers remarkable impact strength

Outstanding temperature performance and good resistance to chemicals make it ideal for the arduous applications

- **Connection Seal**

Prevent accidental disconnection or theft of equipment

- **Tight and Secure**

The cable gland has an improved locking mechanism that will apply pressure to the cable for the lifetime of the product.

- **Prolonged Earth Connection**

The earth connection is specifically designed, so that in the unlikely event of failure of the cable gland and the wires detach from the terminals the earth terminal will be the last to disconnect.

For extra protection the earth terminal is provided with 2 connection screws

- **Suspension Loop**

Products can be suspended above the floor, helping to keep the workspace in order.

- **Quick and Easy to use**

- **Clear markings and terminal identification**

- **Clear instructions for cable strip length, tightening torque and opening of the product.**

**IP44
SPLASHPROOF
100 - 130V
50 - 60 Hz**

Plugs



Connectors



Socket Outlets

ANGLED

SURFACE



SURFACE – LOOP IN



STRAIGHT

PANEL MOUNTING



Amps Pin.
Config-
uration Earth
Hour
Pos

16	2P+E	4	K9000YEL	K9100YEL	K9200YEL	K13200YEL	K9400YEL
16	3P+E	4	K9005YEL	K9105YEL	K9205YEL		K9405YEL
16	3P+N+E	4	K9013YEL	K9113YEL	K9213YEL		K9413YEL
32	2P+E	4	K9032YEL	K9132YEL	K9232YEL	K13232YEL	K9432YEL
32	3P+E	4		K9135YEL	K9235YEL		
32	3P+N+E	4	K9043YEL	K9142YEL	K9239YEL		

Fitted with
cable entry gland.
BS EN 60309

Fitted with
cable entry gland.
BS EN 60309

16A Top conduit (M20) or
rear cable entry, complete
with blanking plug.

32A Top conduit (M25) or
rear cable entry, complete
with blanking plug.

BS EN 60309

Suitable for top entry
2 x Ø25.

Fitted with terminals
for Loop In 2 x 10mm².
BS EN 60309

All flanges have the same
fixing centres and outside
dimensions to assist panel
builders.

Minimised flange option
available (see page 258).
BS EN 60309

**IP67
WATERTIGHT
100 - 130V
50 - 60 Hz**

Plugs



Connectors



Socket Outlets

ANGLED

SURFACE



SURFACE – LOOP IN



PANEL MOUNTING



Amps Pin.
Config-
uration Earth
Hour
Pos

16	2P+E	4	K9023YEL	K9123YEL	K9193YEL	K13023YEL	K9802YEL
32	2P+E	4	K9053YEL	K9155YEL	K9761YEL	K13053YEL	K9865YEL
63	2P+E	4	K9294YEL	K9855YEL			

Suitable for flexible cable only.
63A: with external clamp.
BS EN 60309

Suitable for flexible cable only.
63A: with external clamp.
BS EN 60309

Suitable for top entry 2 x Ø25
or bottom entry 2 x Ø20.
Will accept FL13 flange at top.
BS EN 60309

Suitable for top entry 2 x Ø25
BS EN 60309

All flanges have the same
fixing centres and outside
dimensions to assist panel
builders.
BS EN 60309

**IP44
SPLASHPROOF
100 - 130V
50 - 60 Hz
16 Amps
2P+E**

Socket Outlets

TWIN

SURFACE

Prewired

Unwired

K13143YEL**K13043YEL**

Suitable for top entry 2 x Ø25 2 x Ø38
Bottom entry 3 x 47.5mm
BS EN 60309

63A plugs and inlets include pilot pins.

63A connectors and sockets with pilot sleeves are available to special order.

All products are available in minimum order quantity of one except K9000 and K9100
(which have a minimum order quantity of 10).

Photographs feature the most representative products.

Design changes may occur (over different current ratings) from one product to another.

technical hotline +44 (0)1268 563720

ingress protected | wiring devices

Socket Outlets ANGLED

PANEL MOUNTING



K9767YEL

K9769YEL

Switchsocket Outlets

ANGLED
INTERLOCKED
SURFACE



K9600YEL
K9606YEL

K9632YEL
K9638YEL

SURFACE



K13600YEL

K13632YEL

SURFACE



K9609YEL

K9642YEL

Appliance Inlets

ANGLED
SURFACE



K9700YEL

K9732YEL

16/32A new range has different fixing centres to old range.
Old range is available for limited period. See technical section for details.
BS EN 60309

Switch can be locked in open or closed position.
BS EN 60309
Aluminium Enclosure

Suitable for top entry 2 x Ø25.
Switch can be locked in open position. Or closed position by removing the tab.
BS EN 60309

With 25mm knockout at top.
Will also accept FL13 flange (top).
Bottom entry M25.
BS EN 60309

16A Top conduit (M20) or rear cable entry, complete with blanking plug.
32A Top conduit (M25) or rear cable entry, complete with blanking plug.
BS EN 60309

Switchsocket Outlets ANGLED INTERLOCKED SURFACE



K9356YEL

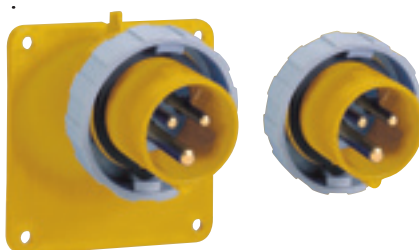
Switchsocket Outlets

SURFACE



K13623YEL
K13653YEL

Appliance Inlet Panels



K9780YEL
K9784YEL

K9788YEL

With 32mm knockouts top and bottom.
Will also accept FL13 flange (top).
Switch can be locked in open position. In closed position by removing the tab.
BS EN 60309

Suitable for top entry 2 x Ø25.
Switch can be locked in open position. In closed position by removing the tab.
BS EN 60309

BS EN 60309

BS EN 60309

See page 258 for details of spare or alternative FL type flanges.

IP44
SPLASHPROOF
200 - 250V
50 - 60 Hz

Plugs



Connectors

Socket Outlets
ANGLED

SURFACE



SURFACE-LOOP IN

STRAIGHT
PANEL
MOUNTING

Amps Pin.
Config-
uration Earth
Hour
Pos

16	2P+E	6	K9001BLU	K9101BLU	K9201BLU	K13201BLU	K9401BLU
16	3P+E	9	K9006BLU	K9106BLU	K9206BLU		K9406BLU
16	3P+N+E	9	K9014BLU	K9114BLU	K9214BLU		K9414BLU
32	2P+E	6	K9033BLU	K9133BLU	K9233BLU	K13233BLU	K9433BLU
32	3P+E	9	K9036BLU	K9136BLU	K9236BLU		
32	3P+N+E	9	K9044BLU	K9143BLU	K9240BLU		K9444BLU
63	2P+E	6	K9063BLU	K9172BLU	K9274BLU		K9472BLU
63	3P+E	9	K9065BLU	K9164BLU	K9264BLU		

16A/32A Fitted with cable entry gland.

63A Fitted with cable entry gland.

Thread size M48.

BS EN 60309

16A/32A Fitted with cable entry gland.

63A Fitted with cable entry gland.

Thread size M48.

BS EN 60309

16A Top conduit (M20) or rear cable entry, complete with blanking plug.

32A Top conduit (M25) or rear cable entry, complete with blanking plug.

63A Top conduit (M32) or rear cable entry, complete with blanking plug.

BS EN 60309

Suitable for top entry 2 x Ø25.

Fitted with terminals for Loop In 2 x 10mm².

BS EN 60309

16/32A All flanges have the same fixing centres and outside dimensions to assist panel builders.

Minimised flange option available (see page 258).

BS EN 60309

IP67
WATERTIGHT
200 - 250V
50 - 60 Hz

Plugs



Connectors

Socket Outlets
ANGLED

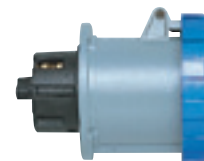
SURFACE



SURFACE - LOOP IN



STRAIGHT



Amps Pin.
Config-
uration Earth
Hour
Pos

16	2P+E	6	K9024BLU	K9124BLU	K9194BLU	K13024BLU	
32	2P+E	6	K9054BLU	K9156BLU	K9762BLU	K13054BLU	
63	2P+E	6	K9298BLU	K9856BLU	K9857BLU		K9828BLU
63	3P+E	9					
125	2P+E	6	K9099BLU	K9189BLU		K9190BLU	K9483BLU

Suitable for flexible cable only 63A and 125A. With external clamp.

BS EN 60309

Suitable for flexible cable only 63A and 125A. With external clamp.

BS EN 60309

Suitable for top entry 2 x Ø25 or bottom entry 2 x Ø20.

Will accept FL13 flange at top.

BS EN 60309

16/32A Suitable for top entry 2 x Ø25

125A 2 x 23/47mm knockouts top and bottom.

BS EN 60309

IP44
SPLASHPROOF
200 - 250V
50 - 60 Hz
16 Amps
2P + E

Socket Outlets
ANGLED TWIN

SURFACE

Prewired Unwired

K13144BLU K13044BLU



Suitable for top entry 2 x Ø25 / 2 x Ø38
Bottom entry 3 x 47.5mm

BS EN 60309

63/125A plugs and inlets include pilot pins.

63A connectors and sockets with pilot sleeves are available to special order.

125A Switchsocket interlocked outlets with pilot sleeves are available to special order.

All products are available in minimum order quantity of one except K9001 and K9101 which have minimum order quantities of 10.

Photographs feature the most representative products. Design changes may occur (over different current ratings) from one product to another.

technical hotline +44 (0)1268 563720

ingress protected | wiring devices

Socket Outlets

ANGLED
PANEL
MOUNTING



Switchsocket Outlets

ANGLED
INTERLOCKED
SURFACE



SURFACE



SURFACE



Appliance Inlets

ANGLED
SURFACE



K9771BLU

K9772BLU

K9773BLU

K9774BLU

K9776BLU

K9544BLU

K9601BLU

K9607BLU

K9633BLU

K9639BLU

K9664BLU

K13601BLU

K13633BLU

K9610BLU

K9643BLU

K9306BLU

K9311BLU

K9701BLU

K9710BLU

K9733BLU

K9740BLU

K9775BLU

16/32A new range has different fixing centres to old range.

Old range is available for limited period. See technical section for details.

BS EN 60309

Switch can be locked in open or closed position

BS EN 60309

Aluminium Enclosure

Suitable for top entry 2 x Ø25.

Switch can be locked in open position. Or closed position by removing the tab.

BS EN 60309

16/32A With 25mm knockout at top. Will also accept FL13 flange (top).

Bottom entry M25.

BS EN 60309

16A Top conduit (M20) or rear cable entry, complete with blanking plug.

32A Top conduit (M25) or rear cable entry, complete with blanking plug.

63A Top conduit (M32) or rear cable entry, complete with blanking plug.

BS EN 60309

Socket Outlets

ANGLED

PANEL MOUNTING



Switchsocket Outlets

ANGLED
INTERLOCKED
SURFACE



SURFACE



Appliance Inlets

ANGLED

SURFACE



SURFACE



Appliance Inlet Panels



K9803BLU

K9866BLU

K9825BLU

K13624BLU

K13654BLU

K9688BLU

K9324BLU

K9369BLU

K9355BLU

K9883BLU

K9826BLU

K9781BLU

K9785BLU

K9789BLU*

K9792BLU*

16/32A All flanges have the same fixing centres and outside dimensions to assist panel builders.

BS EN 60309

16/32A Suitable for top entry 2 x Ø25.

125A 2 x 23/47mm knockouts top and bottom.

Switch can be locked in open position. In closed position by removing the tab.

BS EN 60309

16/32A With 29mm knockout at top Will also accept FL13 flange (top). Bottom entry M25.

63A With 32mm knockouts top and bottom. Will accept FL13 flange top and bottom.

BS EN 60309

2 x 23/47mm knockouts top and bottom.

BS EN 60309

Will accept FL13 flanges top and bottom.

BS EN 60309

*Note: 63 and 125A versions do not include a flange (See page 247 for photograph).

BS EN 60309

**IP44
SPLASHPROOF
380 - 415V
50 - 60 Hz**

Plugs

Connectors

Socket Outlets

ANGLED

STRAIGHT

SURFACE

SURFACE – LOOP IN PANEL MOUNTING

Amps Pin.
Config-
uration

Earth
Hour
Pos

16	2P+E	9	K9002RED	K9102RED	K9202RED		
16	3P+E	6	K9007RED	K9107RED	K9207RED	K13207RED	K9407RED
16	3P+N+E	6	K9015RED	K9115RED	K9215RED	K13215RED	K9415RED
32	3P+E	6	K9037RED	K9137RED	K9237RED	K13237RED	K9437RED
32	3P+N+E	6	K9045RED	K9144RED	K9241RED	K13241RED	K9445RED
63	3P+E	6	K9066RED	K9165RED	K9265RED		K9465RED
63	3P+N+E	6	K9071RED	K9170RED	K9269RED		K9470RED

16A/32A Fitted with cable entry gland.

63A Fitted with cable entry gland.
Thread size M48.

16A/32A Fitted with cable entry gland.

63A Fitted with cable entry gland.
Thread size M48.

16A Top conduit (M20) or rear cable entry, complete with blanking plug.

32A Top conduit (M25) or rear cable entry, complete with blanking plug.

63A Top conduit (M32) or rear cable entry, complete with blanking plug.

Suitable for top entry 2 x Ø25.

Fitted with terminals for Loop In 2 x 10mm².

16/32A All flanges have the same fixing centres and outside dimensions to assist panel builders.

Minimised flange option available (see page 258).

**IP67
WATERTIGHT
380 - 415V
50 - 60 Hz**

Plugs

Connectors

Socket Outlets

ANGLED

STRAIGHT

SURFACE

SURFACE – LOOP IN PANEL MOUNTING

Amps Pin.
Config-
uration

Earth
Hour
Pos

16	3P+E	6	K9025RED	K9125RED	K9763RED	K13025RED	
16	3P+N+E	6	K9026RED	K9126RED	K9764RED	K13026RED	
32	3P+E	6	K9055RED	K9157RED	K9765RED	K13055RED	
32	3P+N+E	6	K9056RED	K9158RED	K9766RED	K13056RED	
63	3P+E	6	K9282RED	K9842RED	K9858RED		K9812RED
63	3P+N+E	6	K9292RED	K9852RED	K9859RED		K9822RED
125	3P+E	6	K9092RED	K9182RED		K9191RED	K9481RED
125	3P+N+E	6	K9097RED	K9187RED		K9192RED	K9482RED

Suitable for flexible cable only. 63A and 125A have external clamp.

Suitable for flexible cable only. 63A and 125A have external clamp.

2 x 29/37mm knockouts (top), 1 x Ø29 and 1 x Ø23 knockout (bottom).
Will accept FL13 flanges top and bottom.

16/32A Fitted with terminals for Loop In. Suitable for top entry 2 x Ø25.

125A Fitted with terminals for Loop In. 2 x 23/47mm knockouts top and bottom for looping 2 x 10mm².

63/125A plugs and inlets include pilot pins.
63A connectors and sockets with pilot sleeves are available to special order.
125A Switchsocket interlocked outlets include pilot sleeves are available to special order.
All products are available in minimum order quantity of one.
Photographs feature the most representative products.
Design changes may occur (over different current ratings) from one product to another.

technical hotline +44 (0)1268 563720

ingress protected | wiring devices

Socket Outlets ANGLED

PANEL MOUNTING



Switchsocket Outlets

ANGLED
INTERLOCKED
SURFACE



SURFACE



SURFACE



Appliance Inlets

ANGLED
SURFACE



K9777RED

K9778RED

K9779RED

K9751RED

K9752RED

K9565RED

K9570RED

K9602RED

K9608RED

K9634RED

K9640RED

K9665RED

K9670RED

K13607RED

K13615RED

K13637RED

K13641RED

K9611RED

K9612RED

K9644RED

K9645RED

K9312RED

K9322RED

K9706RED

K9711RED

K9736RED

K9741RED

K9768RED

16/32A new range has different fixing centres to old range.
Old range is available for limited period. See technical section for details.

Switch can be locked in open or closed position.
Aluminium Enclosure

Suitable for top entry 2 x Ø25.
Switch can be locked in open position. In closed position by removing the tab.

16/32A
With 25mm knockout at top. Will also accept FL13 flange top.
Bottom entry M25.

16A Top conduit (M20) or rear cable entry, complete with blanking plug.
32A Top conduit (M25) or rear cable entry, complete with blanking plug.
63A Top conduit (M32) or rear cable entry, complete with blanking plug.

Socket Outlets ANGLED

PANEL MOUNTING



Switchsocket Outlets ANGLED INTERLOCKED

SURFACE

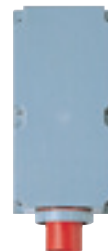


SURFACE



Appliance Inlets ANGLED

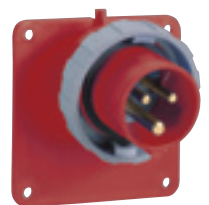
SURFACE



SURFACE



Appliance Inlet Panels



K9807RED

K9815RED

K9870RED

K9873RED

K9582RED

K9592RED

K9691RED

K13625RED

K13626RED

K13655RED

K13656RED

K9694RED

K9327RED

K9330RED

K9359RED

K9362RED

K9342RED

K9352RED

K9884RED

K9829RED

K9827RED

K9793RED*

K9782RED

K9783RED

K9786RED

K9787RED

K9790RED*

K9791RED*

16/32A All flanges have the same fixing centres and outside dimensions to assist panel builders.

16/32A Suitable for top entry 2 x Ø25.
125A 2 x 23/47mm knockouts top and bottom.
Switch can be locked in open position. In closed position by removing the tab.

16/32A With 29mm knockout at top will also accept FL13 flange at top. Bottom. Conduit entry M25.
63A With 32mm knockouts top and bottom. Will accept FL13 flange top and bottom.

2 x 23/47mm knockouts top and bottom.

1 x M40/M32
2 x M20 top
2 x M40/M32
1 x M20 bottom
Will accept FL13 flanges top and bottom.

*Note: 63 and 125A versions do not include a flange (See page 247 for photograph).

See page 258 for details of spare or alternative FL type flanges.

**IP44
SPLASHPROOF
440 - 460V
60 Hz**

**SUITABLE FOR
MARINE
INSTALLATIONS**

Amps	Pin. Config- uration	Earth Hour Pos
16	3P+E	11
16	3P+N+E	11
32	3P+E	11
32	3P+N+E	11

Plugs



Fitted with cable entry gland.

Connectors



Fitted with cable entry gland.

Socket Outlet

**ANGLED
SURFACE**



16A Top conduit (M20) or rear cable entry, complete with blanking plug.
32A Top conduit (M25) or rear cable entry, complete with blanking plug.

**STRAIGHT
PANEL MOUNTING**



All flanges have the same fixing centres and outside dimensions to assist panel builders.
Minimised flange option available (see page 258).

**ANGLED
PANEL MOUNTING**



16/32A new range has different fixing centres to old range.
Old range is available for limited period. See technical section for details.

16	3P+E	11	K9008RED	K9108RED	K9208RED		
16	3P+N+E	11	K9016RED	K9116RED	K9216RED	K9416RED	K9754RED
32	3P+E	11	K9038RED				K9755RED
32	3P+N+E	11	K9046RED	K9145RED	K9242RED	K9446RED	

**IP44
SPLASHPROOF
440 - 460V
60 Hz**

**SUITABLE FOR
MARINE
INSTALLATIONS**

Amps	Pin. Config- uration	Earth Hour Pos
16	3P+E	11
16	3P+N+E	11
32	3P+E	11
32	3P+N+E	11

Switchsocket Outlets Interlocked SURFACE



Switch can be locked in open or closed position. Aluminium Enclosure.

16	3P+E	11	K9603RED				
16	3P+N+E	11					
32	3P+E	11	K9635RED				
32	3P+N+E	11	K9641RED				

**IP67
WATERTIGHT
440 - 460V
60 Hz**

**SUITABLE FOR
MARINE
INSTALLATIONS**

Amps	Pin. Config- uration	Earth Hour Pos
63	3P+E	11
63	3P+N+E	11
125	3P+E	11

Plugs



Suitable for flexible cable only.
With external clamp.

Connectors



Suitable for flexible cable only.
With external clamp.

Socket Outlets

**ANGLED
SURFACE**



2 x 23/47mm knockouts top and bottom.

Switchsocket Outlets

**ANGLED INTERLOCKED
SURFACE**



2 x 23/47mm knockouts top and bottom.
Switch can be locked in open position. In closed position by removing the tab.

SURFACE



With 32mm knockouts top and bottom.
Will accept FL13 flange top and bottom.

63	3P+E	11	K9283RED				K9343RED
63	3P+N+E	11	K9293RED	K9853RED			K9353RED
125	3P+E	11	K9093RED	K9183RED	K9195RED	K9692RED	

63/125A plugs and inlets include pilot pins.
63A connectors and sockets with pilot sleeves are available to special order.
125A Switchsocket interlocked outlets with pilot sleeves are available to special order.

All products are available in minimum order quantity of one.
Photographs feature the most representative products.
Small design changes may occur (over different current ratings) from one product to another.

technical hotline +44 (0)1268 563720

ingress protected | wiring devices

**IP44
SPLASHPROOF
480 - 500V
50 - 60 Hz**

Plugs

Connectors

Socket Outlets

ANGLED

SURFACE



Amps	Pin. Config-uration	Earth Hour Pos
16	3P+E	7
32	3P+E	7

16	3P+E	7	K9009BLK	K9109BLK	K9209BLK		
32	3P+E	7	K9039BLK	K9139BLK	K9238BLK		

Fitted with cable entry gland.

Fitted with cable entry gland.

16A Top conduit (M20) or rear cable entry, complete with blanking plug.

32A Top conduit (M25) or rear cable entry, complete with blanking plug.

**IP44
SPLASHPROOF
480 - 500V
50 - 60 Hz**

Switch Socket Outlets

ANGLED

INTERLOCKED

SURFACE

Appliance Inlets

ANGLED

SURFACE



Amps	Pin. Config-uration	Earth Hour Pos
16	3P+E	7
32	3P+E	7

16	3P+E	7					
32	3P+E	7	K9636BLK	K9737BLK			

Switch can be locked in open or closed position.

Aluminium Enclosure

16A Top conduit (M20) or rear cable entry, complete with blanking plug.

32A Top conduit (M25) or rear cable entry, complete with blanking plug.

**IP67
WATERTIGHT
480 - 500V
50 - 60 Hz**

Plugs

Connectors

Switchsocket Outlets

ANGLED

INTERLOCKED

SURFACE



Amps	Pin. Config-uration	Earth Hour Pos
63	3P+E	7

63	3P+E	7	K9284BLK	K9844BLK	K9344BLK		
----	------	---	-----------------	-----------------	-----------------	--	--

Suitable for flexible cable only. With external clamp

Suitable for flexible cable only. With external clamp

63A With 32mm knockouts top and bottom. Will accept FL13 flange top and bottom.

63/125A plugs and inlets include pilot pins. 63A connectors and sockets with pilot sleeves are available to special order. All products are available in a minimum order quantity of one. Design changes may occur (over different current ratings) from one product to another.

IP44
SPLASHPROOF
>50V
100 - 300 Hz

Plugs



Connectors



Socket Outlets

ANGLED
SURFACE



STRAIGHT
PANEL MOUNTING



Amps Pin.
Config-
uration Earth
Hour
Pos

16 3P+E 10

K9010GRN

K9110GRN

K9210GRN

K9410GRN

Fitted with cable entry gland.

Fitted with cable entry gland.

Top conduit (M20) or rear cable entry, complete with blanking plug.

All flanges have the same fixing centres and outside dimensions to assist panel builders.

Minimised flange option available (see page 258).

IP44
SPLASHPROOF
>50V
300 - 500 Hz

Plugs



Connectors



Socket Outlets

ANGLED
SURFACE



STRAIGHT
PANEL MOUNTING



Amps Pin.
Config-
uration Earth
Hour
Pos

16 3P+E 2
16 3P+N+E 2
32 3P+N+E 2

K9011GRN

K9111GRN

K9211GRN

K9417GRN

Fitted with cable entry gland.

Fitted with cable entry gland.

16A Top conduit (M20) or rear cable entry, complete with blanking plug.

32A Top conduit (M25) or rear cable entry, complete with blanking plug.

All flanges have the same fixing centres and outside dimensions to assist panel builders.

Minimised flange option available (see page 258).

IP44
SPLASHPROOF
>50V
>300 - 500 Hz

Switch Socket
Outlets

ANGLED
INTERLOCKED
SURFACE



Amps Pin.
Config-
uration Earth
Hour
Pos

16 3P+E 2

K9605GRN

Switch can be locked in open or closed position. Aluminium Enclosure.

technical hotline +44 (0)1268 563720

ingress protected | wiring devices

**IP44
SPLASHPROOF
IS TRAN~
50 - 60 Hz**

Plugs



Connectors



Socket Outlets

**ANGLED
SURFACE**



**STRAIGHT
PANEL MOUNTING**



**ANGLED
PANEL MOUNTING**



Amps Pin. Config-uration Earth Hour Pos

16 2P+E 12

K9004GRY

K9104GRY

K9204GRY

K9404GRY

K9756GRY

Fitted with cable entry gland.

Fitted with cable entry gland.

Top conduit (M20) or rear cable entry, complete with blanking plug.

All flanges have the same fixing centres and outside dimensions to assist panel builders. Minimised flange option available (see page 258).

16/32A new range has different fixing centres to old range. Old range is available for limited period. See technical section for details.

**IP44
SPLASHPROOF
>50 - 250V
d.c.**

Plugs



Connectors



Socket Outlets

**ANGLED
SURFACE**



**STRAIGHT
PANEL MOUNTING**



Amps Pin. Config-uration Earth Hour Pos

16 2P+E 3

K9003GRY

K9103GRY

K9203GRY

K9403GRY

Fitted with cable entry gland.

Fitted with cable entry gland.

Top conduit (M20) or rear cable entry, complete with blanking plug.

All flanges have the same fixing centres and outside dimensions to assist panel builders.

Minimised flange option available (see page 258).

All products are available in minimum order quantity of one.

Photographs feature the most representative products. Design changes may occur (over different current ratings) from one product to another.

IP44
SPLASHPROOF
25V
50 - 60 Hz

ELV RANGE

Amps Pin.
Config-
uration

Plugs



Connectors



Socket Outlets

STRAIGHT
SURFACE



ANGLED
PANEL MOUNTING



Appliance Inlets

SURFACE



16	2P		K9018VLT	K9118VLT	K9253VLT	K9518VLT	K9725VLT
16	3P		K9019VLT	K9119VLT	K9254VLT	K9519VLT	K9726VLT

IP44
SPLASHPROOF
50V
50 - 60 Hz

ELV RANGE

Amps Pin. Minor
Config- Key
uration Pos

Plugs



Connectors



Socket Outlets

STRAIGHT
SURFACE



ANGLED
PANEL MOUNTING



16	2P	12	K9020WHI	K9120WHI	K9255WHI	K9520WHI	
16	3P	12	K9021WHI	K9121WHI	K9256WHI	K9521WHI	

Top conduit or rear cable entry.
Supplied with M25 blanking
plug/cable entry.

Top conduit or rear cable entry
Supplied with M25 blanking
plug/cable entry.

IP44
SPLASHPROOF
25 & 50V
d.c.

ELV RANGE

Amps Pin. Minor
Config- Key
uration Pos

Plugs



Connectors



Socket Outlets

STRAIGHT
SURFACE



ANGLED
PANEL MOUNTING



16	2P	10	K9022WHI	K9122WHI	K9257WHI	K9522WHI	
----	----	----	-----------------	-----------------	-----------------	-----------------	--

All violet and white products on this page are made of Polyamide

Top conduit or rear cable entry.
Supplied with M25 blanking
plug/cable entry.

technical hotline +44 (0)1268 563720

ingress protected | wiring devices

110 - 130V
50 - 60 Hz

Three Way Adaptor

IP44 SPLASHPROOF



Combi Blocks THREE WAY

IP44 SPLASHPROOF



TWO WAY

IP57 WATERTIGHT



TWO WAY 30mA RCD PROTECTED

IP44 SPLASHPROOF



Amps Pin. Config-uration Earth Hour Pos

16 2P+E 4

K9907YEL
13503
13507
13505
PBT enclosure
One appliance inlet and three socket outlets

Rubber housing

Rubber housing

Rubber housing

200 - 250V
50 - 60 Hz

Three Way Adaptor

IP44 SPLASHPROOF



Combi Blocks THREE WAY

IP44 SPLASHPROOF



TWO WAY

IP57 WATERTIGHT



TWO WAY 30mA RCD PROTECTED

IP44 SPLASHPROOF



Amps Pin. Config-uration Earth Hour Pos

16 2P+E 6

K9908BLU
13504
13508
13506
PBT enclosure
One appliance inlet and three socket outlets

Rubber housing

Rubber housing

Rubber housing

380 - 415V
50 - 60 Hz

Three Way Adaptor

IP44 SPLASHPROOF



Amps Pin. Config-uration Earth Hour Pos

16 3P+E 6

K9910RED

16 3P+N+E 6

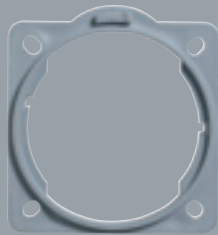
K9911RED
PBT enclosure
One appliance inlet and three socket outlets

Protective Covers For Inlets



9960BLK

Minimised and Alternate Flanges



K9996



K9981/2/3

Spare FL Type Flange Plates Gland Plates And Gaskets

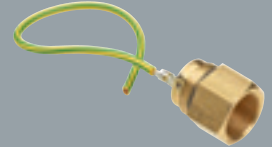


9953GRY

Earth Lead Adaptors And Blanking Plugs



9933



9936

9960BLK
FOR 2P+E, 16A

9965BLK
FOR ALL 125A (IP67)

9966BLK
2P+E, 3P+E, 32A

9967BLK
FOR ALL 63A (IP44)

1

Minimised:

1

K9996
FOR 2P+E, 16A

10

1

Alternate:

1

K9981
FOR 2P+E, 16A

10

K9982
FOR 3P+E, 3P+N+E, 16A

10

K9983
FOR 2P+E, 3P+E, 3P+N+E, 32A

10

9953GRY
GLAND PLATE
UNDRILLED FL13

1

9933
M20 X 1.5/ M20 X 1.5 THREAD SIZE
USED ON ALL 16A SOCKET OUTLETS
AND APPLIANCE INLETS (EXCEPT
INTERLOCKED). ALSO USED ON
16A AND 25A SAFETYSWITCHES

1

9934
M25 x 1.5/ M25 x 1.5 THREAD SIZE
USED ON ALL 32A SOCKET OUTLETS AND
APPLIANCE INLETS (EXCEPT INTERLOCKED)

5

9936
PG21/ M25 X 1.5 THREAD SIZE
USED ON 16A & 32A INTERLOCKED
SWITCHSOCKET OUTLETS

5

9937
M32 X 1.5/ M32 X 1.5 THREAD SIZE
USED ON ALL 63A SOCKET OUTLETS AND
APPLIANCE INLETS

5

SUITABLE FOR
IP44 PANEL SOCKET
STRAIGHT OUTLETS

SUITABLE FOR
COMMANDO UNITS AND
SAFETYSWITCHES

9937 must not be used on installations that are
rated above 63A

technical hotline +44 (0)1268 563720

ingress protected | wiring devices

Commando Industrial Plugs and Sockets



By referring to the chart below, it can be seen that there can be no interchangeability of products as the earth socket tube is placed in a different 'clock' position according to the voltage and frequency. This clock position is determined by looking into a socket-outlet from the front with the key-way at the bottom.

Unless otherwise stated all frequencies are 50-60Hz.

Pilot Contact

Commando accessories provided with pilot contacts, in accordance with IEC.60309: 1997 and BS EN.60309:1998 have pilot pins shorter than other pins in the unit. Connection to suitable control circuitry will provide electrical interlock as the pilot circuit will make last and break first relative to the mains supply.

The pilot contact is positioned centrally in 3P +E and 3P+N+E accessories and diametrically opposite the earthing contact in 2P+E accessories.

Rating Code

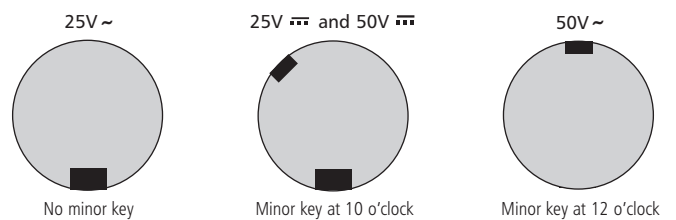
The rating code which is found on the rating label of each accessory gives details of rated current, rated (operating) voltage (or range of voltages), rated frequency (if not 50/60Hz) and a symbol to indicate the position of the earth contact.

(i) For all products (except extra low voltage) the position given is that of the earth pin when a socket-outlet/connector is viewed from the front with the key-way at the bottom. When viewing a plug/ appliance inlet from the front with the key at the bottom, the position of the earth pin is reversed, i.e., a 10 o'clock will appear at 2 o'clock and other positions are relative.

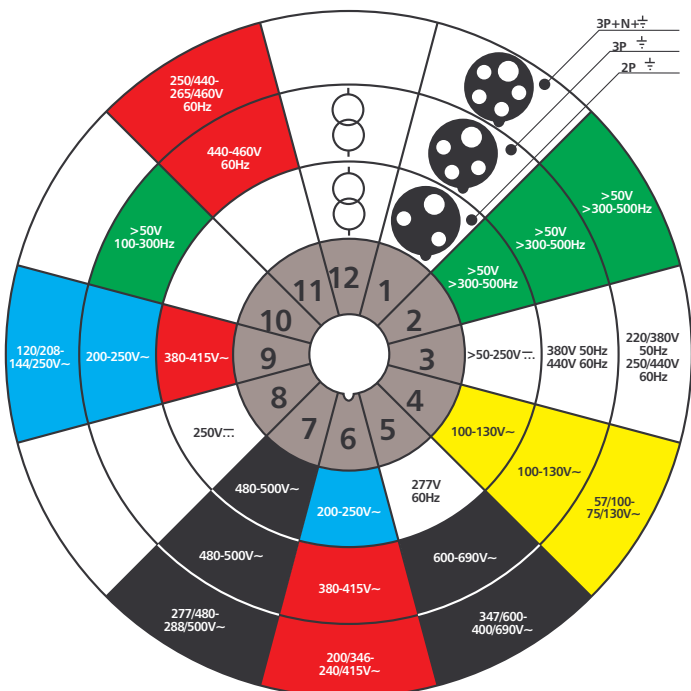
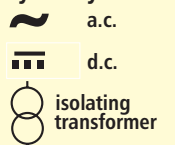
(ii) For extra low voltage products (i.e., white and violet) the position given is that of the minor key when a socket-outlet is viewed from the front with the major key at the bottom. When viewing a plug/ appliance inlet from the front with the major key-way at the bottom, the position of the minor key-way is reversed, i.e., 10 o'clock will appear as 2 o'clock and other positions are relative.

Voltage	Colour code
25	
50	
100 - 130	
200 - 250	
346 - 460	
500 - 750	
>50, 100 - 500Hz	

MAJOR AND MINOR KEY POSITIONS FOR ELV SOCKETS



Key for symbols





COMMANDO COMBI™

RANGE INTRODUCTION

Commando Combi units offer RCD protection in hazardous environments.

Enclosed in PC and ABS boxes, these units offer protection against high impact and are available in IP44 (Splashproof) or IP67 (Watertight), making Commando Combination units some of the safest products available.

FEATURES & BENEFITS

- High Impact Protection to IK08
- Available in either IP44 (Splashproof) or IP67 (Watertight) options
- Pre-designed, factory built option

HOW TO SPECIFY

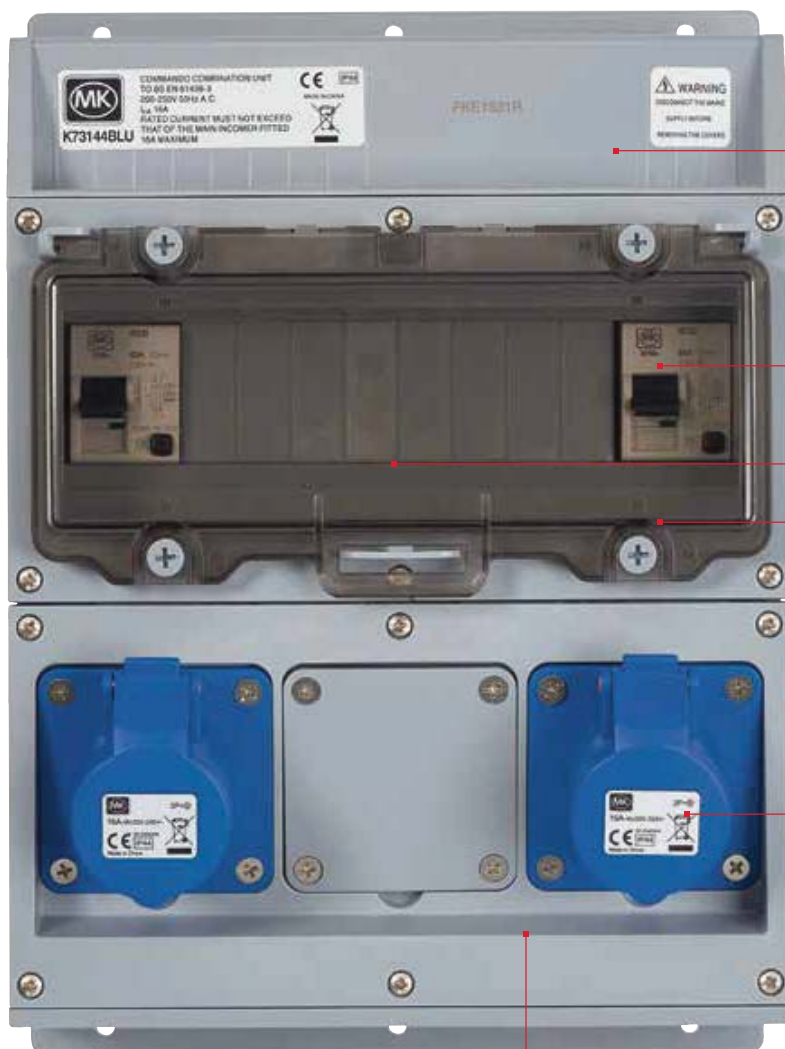
An industrial range of IP44 & IP67 ingress protected "Commando" combination units designed to provide RCD protection in hazardous environments. Options must be available for a maximum of three Commando sockets. Products must have outstanding temperature performance and resistance to chemicals to ensure operation in arduous applications. All sockets to have self-cleaning contacts and nickel plated pins to provide resistance to humidity and wear. Terminals to be clearly identified and have terminal screws backed out to provide ease of installation.



Technical Hotline
+44 (0)1268 563720

Commando Combi™

WIRING DEVICES
INGRESS PROTECTED



TOUGH AND IMPACT
RESISTANT TO IK08

OPTIONAL RCD
PROTECTION

LOCKABLE LID

GOOD CHEMICAL
RESISTANCE

IP44 PRE-CONFIGURED SOCKET
OUTLETS (IP67 AVAILABLE UPON
REQUEST CONTACT TECHNICAL
HOTLINE ON +44 (0)1268 563720)

CUSTOM DESIGNED, FACTORY BUILT
OPTION AVAILABLE
CONTACT TECHNICAL HOTLINE
ON +44 (0)1268 563720
SEE PAGE 268.

Socket outlet selection includes 16A, 32A
and 63A angled socket outlets across all
relevant voltages.



IP44 and IP67
waterproof socket and
switchsocket outlets.



Commando Combi™

mkelectric.co.uk



**IP44
SPLASHPROOF
100 - 130V
50 - 60 HZ**

Socket Outlets

SINGLE
PRE-WIRED WITH
30mA RCD

TWIN
PRE-WIRED WITH
30mA RCD
INDIVIDUALLY PROTECTED

ANGLED
TWIN
SURFACE
PRE-WIRED

Switchsocket Outlet

INTERLOCKED
PRE-WIRED WITH
30mA RCD

Pin.
Config-
uration
Amps Earth



16	2P+E	4	K13413YEL	K73173YEL	K73143YEL	K13309YEL
32	2P+E	4				K13342YEL

Suitable for top entry
2 x 25mm

Suitable for top entry
2 x Ø25 / 2 x Ø38
bottom entry 3 x 47.5mm

Suitable for top entry
2 x Ø25 / 2 x Ø38
bottom entry 3 x 47.5mm

Suitable for top entry
2 x Ø25

**IP44
SPLASHPROOF
200 - 250V
50 - 60 HZ**

Socket Outlets

SINGLE
PRE-WIRED WITH
30mA RCD

ANGLED
TWIN
SURFACE
PRE-WIRED

Switchsocket Outlet

INTERLOCKED
PRE-WIRED WITH
30mA RCD

Pin.
Config-
uration
Amps Earth



16	2P+E	6	K73414BLU	K73174BLU	K73310BLU	
63	2P+E	6	K73463BLU		K13343BLU	

Suitable for top entry
2 x 25mm

Suitable for top entry
2 x Ø25 / 2 x Ø38
Bottom entry 3 x 47.5mm

Suitable for top entry
2 x 25mm

**IP44
SPLASHPROOF
380 - 415V
50 - 60 HZ**

Socket Outlets

SINGLE
PRE-WIRED WITH
30mA RCD

SINGLE
PRE-WIRED WITH
SINGLE
30mA RCD

Switchsocket Outlet

INTERLOCKED
PRE-WIRED WITH
30mA RCD

Pin.
Config-
uration
Amps Earth



16	3P+E	6	K13415RED		K13311RED	
16	3P+N+E	6	K13416RED		K13312RED	
32	3P+E	6	K13434RED		K13344RED	
32	3P+N+E	6	K73435RED		K13345RED	
63	3P+N+E	6		K73465RED		

16/32A Suitable for top entry
2 x 25mm

Suitable for top entry
2 x Ø25 / 2 x Ø38
Bottom entry 3 x 47.5mm

Suitable for top entry
2 x 25mm



Technical Hotline
+44 (0)1268 563720

Commando Combi™

WIRING DEVICES
INGRESS PROTECTED

**IP67
WATERTIGHT
100 - 130V
50 - 60 HZ**

Socket Outlet
SINGLE
PRE-WIRED WITH
30mA RCD

**Switchsocket
Outlet**
INTERLOCKED
PRE-WIRED WITH
30mA RCD

Pin.
Config-
uration
Amps Earth



16	2P+E	4	K13713YEL	K13346YEL
32	2P+E	4	K73718YEL	

Suitable for top entry
2 x ø25

Suitable for top entry
2 x ø25

**IP67
WATERTIGHT
200 - 250V
50 - 60 HZ**

Socket Outlet
SINGLE
PRE-WIRED
WITH
30mA RCD

**Switchsocket
Outlet**
INTERLOCKED
PRE-WIRED WITH
30mA RCD

Pin.
Config-
uration
Amps Earth



16	2P+E	6	K73714BLU	K13348BLU
16	3P+E	9		
32	2P+E	6	K13733BLU	K13349BLU

Suitable for top entry
2 x ø25

Suitable for top entry
2 x ø25

**IP67
SPASHPROOF
380 - 415V
50 - 60 HZ**

Socket Outlet
SINGLE
PRE-WIRED WITH
30mA RCD

**Switchsocket
Outlet**
INTERLOCKED
PRE-WIRED WITH
30mA RCD

Pin.
Config-
uration
Amps Earth



16	3P+E	6		K13351RED
16	3P+N+E	6	K13716RED	K13352RED
32	3P+E	6		K13353RED
32	3P+N+E	6	K73735RED	

Suitable for top entry
2 x ø25

Suitable for top entry
2 x ø25





MODULAR COMBI™

RANGE INTRODUCTION

A custom design service for Commando Combi products offering circuit protection, control and data products for use in hazardous environments. Modular Combi units are made to order and designed for almost any application.

Enclosed in durable Polycarb and ABS boxes, these units offer protection against high impact and are available in both IP44 and IP67, making Commando Combination units some of the safest products available.

Please contact the Technical Helpline (01268 563720) for further details or email mk.technical@honeywell.com for assistance on options available to meet your application requirements.

FEATURES & BENEFITS

- Compact units replace outlets traditionally scattered around walls
- Combination of outlets with MCB and RCD protection
- High Impact Protection
- Custom design service to suit various applications

HOW TO SPECIFY

An industrial range of IP44 & IP67 ingress protected "Commando" combination units designed to provide RCD protection in hazardous environments. Options must be available for a maximum of three Commando sockets, Masterseal and data connections. Products must have outstanding temperature performance and resistance to chemicals to ensure operation in arduous applications. All sockets to have self-cleaning contacts and nickel plated pins to provide resistance to humidity and wear. Terminals to be clearly identified and have terminal screws backed out to provide ease of installation.



Technical Hotline
+44 (0)1268 563720

Modular Combi™

WIRING DEVICES
INGRESS PROTECTED

SUMMARY GUIDE

STEP 1 Choose your system type and number of Commando socket outlets

Rating	Pin Config.	SOCKET OUTLETS - STRAIGHT			SOCKET OUTLETS - INTERLOCKED		
		100-130V	200-250V	380-415V	100-130V	200-250V	380-415V
16A	2P+E	✓	✓		✓	✓	
16A	3P+E	✓	✓	✓			✓
16A	3P+N+E	✓	✓	✓			✓
32A	2P+E	✓	✓		✓	✓	
32A	3P+E			✓			✓
32A	3P+N+E		✓	✓			✓
63A	2P+E		✓				
63A	3P+E			✓			
63A	3P+N+E			✓			

STEP 2 Choose the type of circuit protection for the outlets

Rating	SWITCH DISCONNECTOR		MCB SINGLE POLE					MCB DOUBLE POLE			MCB TRIPLE POLE		
	2 POLE	4 POLE	6kA TYPE B	TYPE C	10kA TYPE B	TYPE C	TYPE D	TYPE B	TYPE C	TYPE D	TYPE B	TYPE C	TYPE D
16A			✓	✓	✓	✓	✓	✓	✓	✓	✓	✓	✓
25A													
32A			✓	✓	✓	✓	✓	✓	✓	✓	✓	✓	✓
40A													
63A	✓				✓	✓	✓	✓	✓	✓	✓	✓	✓
80A													
100A	✓												
125A	✓	✓											

Rating	SRCBO One Module SOLID NEUTRAL (30mA)		RCD 110V DOUBLE POLE		RCD 230V DOUBLE POLE		RCD PULSATING		RCD 230/400V FOUR POLE	
	6kA TYPE B		10mA	30mA	10mA	30mA	10mA	30mA	30mA	
16A	✓		✓	✓	✓	✓	✓			
25A									✓	
32A	✓			✓		✓		✓		
40A									✓	
63A						✓			✓	
80A						✓				
100A						✓				

STEP 3 Choose the Control Products

Rating	CONTACTORS			TIME SWITCHES					
	ONE MODULE	TWO MODULE	THREE MODULE	SYNCHRONOUS THREE MODULE	QUARTZ STABILISED THREE MODULE	SYNCHRONOUS ONE MODULE	DIGITAL ONE CHANNEL		DIGITAL TWO CHANNEL
16A				✓	✓	✓	✓	✓	✓
20A	✓	✓		✓	✓				

STEP 3 Choose the Control Products

MASTERSEAL				
SOCKET OUTLETS		SWITCH ENCLOSURES		SWITCH MODULES
13AMP	16AMP			20AMP 10AMP
✓	✓	✓		✓ ✓

Overall Dimensions

DIMENSIONS				
HEIGHT	WIDTH	DEPTH (WITH VARIOUS PRODUCTS)		
1 ROW	228 MM	252MM	16A SKT OUTLET	139MM
2 ROW	358MM	252MM	32A SKT OUTLET	148MM
3 ROW	488MM	252MM	16A INTERLOCK	152MM
4 ROW	618MM	252MM	32A SKT OUTLET	161MM
5 ROW	748MM	252MM	63A SKT OUTLET	167MM
			MASTERSEAL SKT O/T, FCU & DATA	146MM
			MASTERSEAL SWITCH	135MM

STEP 4 Email mk.technical@honeywell.com for design and quotation prior to placing your order.



COMMANDO SAFETY SWITCH

RANGE INTRODUCTION

Commando Safety switches are manufactured from Polybutylene Terephthalate (PBT) for maximum impact resistance.

The range offers a selection of IP54 and IP65 ratings to cover a variety of indoor and outdoor needs. The units are lockable for added safety and accept auxiliary contacts to increase further the range of applications.

A range of Triple Pole and Neutral switches are also available, manufactured from Polycarbonate (PC).

FEATURES & BENEFITS

IMPACT RESISTANT

PBT and PC enclosures provide remarkable impact resistance

WATER RESISTANT

IP54, IP65 and IP66 ratings mean Commando Safety switch and Triple Pole and Neutral switches are suitable for outdoor and indoor use

ADDED SAFETY

Commando Safety switches have mechanically interlocked lids meaning the cover is impossible to remove when the switch is in the 'ON' position

HOW TO SPECIFY

A range of industrial "Commando" triple pole and neutral Safety Switches designed to provide IP65 ingress protection. Product case must be interlocked to ensure that the case cannot be opened while the switch is in the "ON" position. All switches are to have Neutral and earth terminals fitted as standard and have I.S.O. metric conduit entries for ease of installation.



Technical Hotline
+44 (0)1268 563720

Commando Safetyswitch

WIRING DEVICES
INGRESS PROTECTED

Commando Safetyswitches

I.S.O. metric
conduit entries for
ease of installation

Neutral and Earth
terminals fitted as
standard

PBT enclosure
offers remarkable
impact resistance

Choice of units
splashproof to
IP54 and IP65
for use
indoors or
outdoors

Direct acting
operating handle
gives positive
indication of the
state of the
contacts

63A, 100A and
125A units have
mechanically
operated lids for
additional safety
in use. This
means the cover
is impossible to
remove when the
switch is in the
'ON' position



Switch Disconnectors

16 AMP (lth)
3 POLE
IP65

25 AMP (lth)
3 POLE
IP65



K6816
K6816YEL
UTILISATION CATEGORY
AC23A RATED OPERATIONAL:
CURRENT (Ie) 10A
VOLTAGE (Ue) 415V 50/60 HZ
POWER 5.5 KW

K6825
K6825YEL
UTILISATION CATEGORY
AC23A RATED OPERATIONAL:
CURRENT (Ie) 20A
VOLTAGE (Ue) 415V 50/60 HZ
POWER 11 KW

IP RATING
K6816 IP65
K6816YEL IP65
Supplied with blanking plugs and
neutral terminals
TERMINAL CAPACITY
1.5 - 4mm²
CONDUIT ENTRY
4 x M20
K6816
Auxiliary contacts
List No: 6818 and 6819
Will accept one auxiliary contact.
K6816YEL
Auxiliary contact included.
BS EN 60947-3:2009

IP RATING
K6825 IP65
K6825YEL IP65
Supplied with blanking plugs and
neutral terminals
TERMINAL CAPACITY
1.5 - 4mm²
CONDUIT ENTRY
4 x M20
K6825
Auxiliary contacts
List No: 6818 and 6819
Will accept one auxiliary contact.
K6825YEL
Auxiliary contact included.
BS EN 60947-3:2009

Commando Safetyswitch

mkelectric.co.uk



Switch Disconnectors

25 AMP (lth)
6 POLE
IP65

40 AMP (lth)
3 POLE
IP65

63 AMP (lth)
3 POLE
IP54 and IP65



K6725



K6725YEL



K6840



K6840YEL



6863



6863YEL

K6725

K6725YEL

UTILISATION CATEGORY
AC23A RATED OPERATIONAL:
CURRENT (Ie) 20A
VOLTAGE (Ue) 415V 50/60 HZ
POWER 11 KW

IP RATING

K6725 IP65

K6725YEL IP65

Supplied with blanking plugs and neutral terminals

TERMINAL CAPACITY

1.5 – 4mm²

CONDUIT ENTRY

4 x M20

2 x 18mm knockouts

K6725

Auxiliary contacts

List No: 6818 and 6819

Will accept one auxiliary contact.

K6725YEL

Auxiliary contact included.

BS EN 60947-3:2009

1
1

K6840

K6840YEL

UTILISATION CATEGORY
AC23A RATED OPERATIONAL:
CURRENT (Ie) 25A
VOLTAGE (Ue) 415V 50/60 HZ
POWER 15 KW

IP RATING

K6840 IP65

K6840YEL IP65

Supplied with blanking plugs and neutral terminals

TERMINAL CAPACITY

1.5 – 10mm²

CONDUIT ENTRY

4 x M25

K6840

Auxiliary contacts

List No: 6818 and 6819

Will accept one auxiliary contact.

K6840YEL

Auxiliary contact included.

BS EN 60947-3:2009

1
1

K6863

K6863YEL

UTILISATION CATEGORY
AC23A RATED OPERATIONAL:
CURRENT (Ie) 45A
VOLTAGE (Ue) 415V 50/60 HZ
POWER 22 KW

IP RATING

6863 IP54

6863YEL IP65

Supplied with blanking plugs and neutral terminals

TERMINAL CAPACITY

1.5 – 16mm²

CONDUIT ENTRY

4 x M32

2 x M16

6863

Auxiliary contacts

List No: 6813 or 6814

6863YEL

Auxiliary contact included.

BS EN 60947-3:2009

1
1



Technical Hotline
+44 (0)1268 563720

Commando Safetyswitch

WIRING DEVICES
INGRESS PROTECTED

Triple Pole And Neutral Switches

4 POLE
IP66



M4413



M4414

2 POLE
IP66



M4417



M4418

Auxiliary Contacts



6813



6814



6817



6818

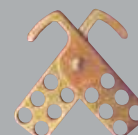


6819

Accessories



MK9933



6810

M4413

4 POLE
UTILISATION CATEGORY
AC23A RATED OPERATIONAL:
CURRENT (Ie) 32A
VOLTAGE (Ue) 240/415V 50/60 HZ
POWER 11 KW

M4414

4 POLE
UTILISATION CATEGORY AC23A RATED
OPERATIONAL:
CURRENT (Ie) 20A
VOLTAGE (Ue) 240/415V 50/60 HZ
POWER 7.5 KW

TERMINAL CAPACITY

16mm² (Rigid stranded cable)

CONDUIT ENTRY

2 x 25mm cable entry top and bottom. Supplied
with 2 x 25mm conduit adaptors.

4 x 20mm, 2 x 25mm knockouts for rear cable
entry.

BS EN 60947-3:2009

M4417

2 POLE
UTILISATION CATEGORY
AC23A RATED OPERATIONAL:
CURRENT (Ie) 32A
VOLTAGE (Ue) 240V 50/60 HZ
POWER 5.5 KW

M4418

2 POLE
UTILISATION CATEGORY
AC23A RATED OPERATIONAL:
CURRENT (Ie) 20A
VOLTAGE (Ue) 240V 50/60 HZ
POWER 3.75 KW

6813

16A (Ith) SINGLE POLE
NORMALLY OPEN
4A OPERATIONAL CURRENT (Ie)

6814

16A (Ith) SINGLE POLE
NORMALLY CLOSED
4A OPERATIONAL CURRENT (Ie)

6817

10A (Ith) SINGLE POLE
NORMALLY OPEN
1.5A OPERATIONAL CURRENT (Ie)

6818

10A (Ith) SINGLE POLE
NORMALLY OPEN,
6A OPERATIONAL CURRENT (Ie)
AC15 @ 230V

6819

10A (Ith) SINGLE POLE
NORMALLY CLOSED, 6A
OPERATIONAL CURRENT (Ie)
AC15 @ 230V

MK9933

EARTH LEAD ADAPTOR
M20 X 1.5 / M20 X 1.5 THREAD
SIZE FOR 16A & 25A
SAFETYSWITCHES

6810

SHACKLE FOR UP TO 6 PADLOCKS

M4413, M4414, M4417, M4418 ENCLOSURES ARE POLYCARBONATE
Polycarbonate enclosures provide extremely high levels of impact resistance. Some chemicals and
synthetic oils can harm polycarbonate. Call technical hotline for further information.