

COPPER TERMINALS

COPPER TERMINALS

Kompress copper tube terminals (prefix CT) are manufactured from precision drawn tubes to BS 2871, they are designed and manufactured to meet performance requirements of BS 4579 Part 1 and are supplied in accordance with our ISO 9001 Accredited Certification



BELL MOUTH CABLE ENTRY

All standard types in the range between 6mm² - 800mm² have bell mouths to ensure easy entry for even flexible conductors.

COPPER SPLICES

Kompress copper tube splices (prefix CS) are manufactured from the same materials and to the same standards as COPPER TERMINALS.

FINISH

Copper terminals and splices are supplied plated as standard to BS 1872 Part 2 for corrosion resistance and attractive appearance.

However, if plain untinned pieces are required please consult the Kompress Sales Office.

TEMPERATURE RATING

The standard electro tinned parts are suitable for use up to temperatures of 150°C. Should a higher temperature capability be required please consult the Kompress Sales Office.

HOW TO SPECIFY

The Kompress part numbering system has been carefully devised to help the specifier understand and recognise each element of the code.

The simple part numbering system makes specifying easy without constant reference to the catalogue.

This is how the part number is created-

eg CT 185 - 16

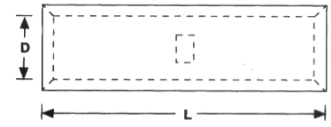
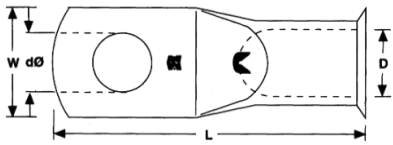
=

CT (Copper Terminal). **185** (Conductor size mm²). **16** (Stud size mm).

COPPER TERMINALS



COPPER TUBE TERMINALS AND SPLICES



PART NO.	CONDUCTOR SIZE mm ²	STUD mm	LENGTH L	WIDTH W	INSIDE DIAMETER D	HOLE DIAMETER dØ	PACK SIZE	RECOMMENDED TOOLING
CT1.5-3	1.5	3	16.0	6.5	1.8	3.2	} 100 {	KT2 KT13
CT1.5-4	1.5	4	17.0	6.5	1.8	4.3		
CT1.5-5	1.5	5	18.0	7.5	1.8	5.3		
CS1.5	1.5	-	14.0	-	1.8	-		
CT2.5-3	2.5	3	16.0	7.5	2.3	3.2	} 100 {	KT2 KT13
CT2.5-4	2.5	4	17.0	7.5	2.3	4.3		
CT2.5-5	2.5	5	18.0	8.5	2.3	5.3		
CT2.5-6	2.5	6	19.0	9.0	2.3	6.5		
CS2.5	2.5	-	16.0	-	2.3	-		
CT4-4	4.0	4	21.0	8.5	3.0	4.3	} 100 {	KT2 KT13
CT4-5	4.0	5	22.0	9.0	3.0	5.3		
CT4-6	4.0	6	23.0	10.0	3.0	6.5		
CS4	4.0	-	19.0	-	3.0	-		
CT6-4	6.0	4	24.6	9.6	4.0	4.3	} 100 {	KT2 KT13
CT6-5	6.0	5	24.6	9.7	4.0	5.3		
CT6-6	6.0	6	24.6	10.0	4.0	6.3		
CT6-8	6.0	8	27.3	12.5	4.0	8.3		
CT6-10	6.0	10	30.7	14.7	4.0	10.3		
CT6-BL	6.0	-	30.7	12.5	4.0	-		
CS6	6.0	-	19.0	-	4.0	-		
CT10-5	10	5	30.0	10.4	4.5	5.1	} 100 {	KT17 KT24 KT23 KFH13C KT25 KFH23H KHH13C
CT10-6	10	6	30.0	10.5	4.5	6.3		
CT10-8	10	8	30.0	12.5	4.5	8.2		
CT10-10	10	10	34.1	14.7	4.5	10.4		
CT10-12	10	12	34.1	17.5	4.5	12.7		
CT10-BL	10	-	34.1	12.5	4.5	-		
CS10	10	-	23.0	-	4.5	-		
CT16-5	16	5	30.7	11.0	5.5	5.2		
CT16-6	16	6	30.7	11.0	5.5	6.3		
CT16-8	16	8	30.7	12.5	5.5	8.3		
CT16-10	16	10	35.9	15.1	5.5	10.3		
CT16-12	16	12	35.9	17.5	5.5	12.8		
CT16-BL	16	-	35.9	12.5	5.5	-		
CS16	16	-	27.0	-	5.5	-		
CT25-5	25	5	32.2	13.1	6.7	5.2	} 100 {	KT24 KT23 KFH13C KT25 KFH23C KHH13C
CT25-6	25	6	32.2	13.1	6.7	6.3		
CT25-8	25	8	32.2	13.1	6.7	8.3		
CT25-10	25	10	36.9	15.1	6.7	10.2		
CT25-12	25	12	36.9	17.5	6.7	12.8		
CT25-BL	25	-	36.9	13.1	6.7	-		
CS25	25	-	31.0	-	6.7	-		

All dimensions in mm

COPPER TERMINALS

COPPER TUBE TERMINALS AND SPLICES

PART NO.	CONDUCTOR SIZE mm ²	STUD mm	LENGTH L	WIDTH W	INSIDE DIAMETER D	HOLE DIAMETER dØ	PACK SIZE	RECOMMENDED TOOLING
CT35-5	35	5	37.6	15.8	8.6	5.2	100	KT24 KT23 KFH23H KT25 KFH13C KHH13C
CT35-6	35	6	37.6	15.8	8.6	6.3		
CT35-8	35	8	37.6	15.8	8.6	8.3		
CT35-10	35	10	41.5	16.2	8.6	10.3		
CT35-12	35	12	41.5	18.6	8.6	12.9		
CT35-14	35	14	43.5	19.6	8.6	14.8		
CT35-BL	35	-	41.5	15.8	8.6	-		
CS35	35	-	35.0	-	8.6	-		

CT50-6	50	6	40.2	17.6	9.6	6.3	100	KT24 KT23 KFH23H KT25 KFH13C KHH13C
CT50-8	50	8	40.2	17.6	9.6	8.3		
CT50-10	50	10	43.2	17.6	9.6	10.3		
CT50-12	50	12	43.2	18.7	9.6	12.8		
CT50-14	50	14	43.2	20.3	9.6	14.8		
CT50-16	50	16	52.8	23.2	9.6	16.5		
CT50-BL	50	-	43.2	17.6	9.6	-		
CS50	50	-	40.0	-	9.6	-		

CT70-6	70	6	50.4	21.8	12.0	6.3	50	KT24 KT23 KFH23H KT25 KFH13C KHH13C
CT70-8	70	8	50.4	21.8	12.0	8.2		
CT70-10	70	10	50.4	21.8	12.0	10.2		
CT70-12	70	12	50.4	21.8	12.0	12.7		
CT70-14	70	14	52.9	22.2	12.0	14.8		
CT70-16	70	16	52.9	22.2	12.0	16.3		
CT70-20	70	20	71.9	30.0	12.0	20.9		
CT70-BL	70	-	52.9	22.2	12.0	-		
CS70	70	-	43.0	-	12.0	-		

CT95-8	95	8	53.2	24.3	13.5	8.3	50	KT23 KT24 KT25 KFH23H KFH13C KFH13C
CT95-10	95	10	53.2	24.3	13.5	10.3		
CT95-12	95	12	53.2	24.3	13.5	12.7		
CT95-14	95	14	56.8	24.3	13.5	14.8		
CT95-16	95	16	56.8	24.3	13.5	16.3		
CT95-20	95	20	73.6	30.0	13.5	20.9		
CT95-BL	95	-	56.8	24.3	13.5	-		
CS95	95	-	45.0	-	13.5	-		

CT120-8	120	8	59.1	27.5	15.0	8.3	25	KT23 KT24 KFH23H KHH13C KFH13C
CT120-10	120	10	59.1	27.5	15.0	10.3		
CT120-12	120	12	59.1	27.5	15.0	12.7		
CT120-14	120	14	64.0	27.5	15.0	14.8		
CT120-16	120	16	64.0	27.5	15.0	16.3		
CT120-20	120	20	76.6	30.0	15.0	20.9		
CT120-BL	120	-	64.0	27.5	15.0	-		
CS120	120	-	48.0	-	15.0	-		

CT150-10	150	10	66.3	30.3	16.5	10.2	25	KT23 KT24 KFH23H KHH13C KFH13C
CT150-12	150	12	66.3	30.3	16.5	12.7		
CT150-14	150	14	66.3	30.3	16.5	14.7		
CT150-16	150	16	71.4	30.3	16.5	16.2		
CT150-20	150	20	71.4	30.3	16.5	20.8		
CT150-BL	150	-	71.4	30.3	16.5	-		
CS150	150	-	53.0	-	16.5	-		

CT185-10	185	10	72.4	34.0	19.0	10.3	25	KT23 KFH13C KHH13C KFH23H
CT185-12	185	12	72.4	34.0	19.0	12.9		
CT185-14	185	14	72.4	34.0	19.0	14.7		
CT185-16	185	16	76.2	34.0	19.0	16.5		
CT185-20	185	20	76.2	34.0	19.0	20.9		
CT185-BL	185	-	76.2	34.0	19.0	-		
CS185	185	-	58.0	-	19.0	-		

All dimensions in mm

COPPER TERMINALS



COPPER TUBE TERMINALS AND SPLICES

PART NO.	CONDUCTOR SIZE mm ²	STUD mm	LENGTH L	WIDTH W	INSIDE DIAMETER D	HOLE DIAMETER dØ	PACK SIZE	RECOMMENDED TOOLING
CT240-10	240	10	91.4	37.8	21.0	10.3	10	KT23 KFH13C KHH13C KFH23H
CT240-12	240	12	91.4	37.8	21.0	12.7		
CT240-14	240	14	91.4	37.8	21.0	14.7		
CT240-16	240	16	91.4	37.8	21.0	16.4		
CT240-20	240	20	91.4	37.8	21.0	20.9		
CT240-BL	240	-	91.4	37.8	21.0	-		
CS240	240	-	58.0	-	21.0	-		
CT300-10	300	10	97.2	43.9	24.5	10.3	10	KFH13C KFH23H KHH13C
CT300-12	300	12	97.2	43.9	24.5	12.7		
CT300-14	300	14	97.2	43.9	24.5	14.7		
CT300-16	300	16	97.2	43.9	24.5	16.4		
CT300-20	300	20	97.2	43.9	24.5	20.9		
CT300-BL	300	-	97.2	43.9	24.5	-		
CS300	300	-	63.0	-	24.5	-		
CT400-12	400	12	102.8	47.4	27.0	12.7	1	KFH13C KFH23H KHH13C
CT400-14	400	14	102.8	47.4	27.0	14.7		
CT400-16	400	16	102.8	47.4	27.0	16.4		
CT400-20	400	20	102.8	47.4	27.0	20.9		
CT400-BL	400	-	102.8	47.4	27.0	-		
CS400	400	-	79.0	-	27.0	-		
CT500-14	500	14	116.2	52.7	30.0	14.7		
CT500-16	500	16	116.2	52.7	30.0	16.4		
CT500-20	500	20	116.2	52.7	30.0	20.9		
CT500-BL	500	-	116.2	52.7	30.0	-		
CS500	500	-	95.0	-	30.0	-		
CT630-4H	630	8	145.8	64.5	35.5	4x8.6	1	KFH23H
CT630-16	630	16	145.8	64.5	35.5	16.4		
CT630-20	630	20	145.8	64.5	35.5	20.9		
CT630-BL	630	-	145.8	64.5	35.5	-		
CS630	630	-	120.0	-	35.5	-		
CT800-4H	800	10	162.5	70.7	39.0	4x10.5	1	Consult Kompres
CT800-20	800	20	162.5	70.7	39.0	20.9		
CT800-BL	800	-	162.5	70.7	39.0	-		
CS800	800	-	130.0	-	39.0	-		
CT1000-4H	1000	10	167.8	76.7	42.0	4x10.5	1	Consult Kompres
CT1000-20	1000	20	167.8	76.7	42.0	20.9		
CT1000-BL	1000	-	167.8	76.7	42.0	-		
CS1000	1000	-	140.0	-	42.0	-		

SPECIAL PURPOSE COPPER TERMINALS



4 HOLE SPECIAL

Size range 10 to 500mm²
With 4 holes in the palm for standard transformer mounting.



LONG PALM

Size range 10 to 1000mm²
Double length palm, normally supplied blank but holes can be provided to order.



COPPER PIN

Size range 10 to 1000mm²
Pin dimensions on request.



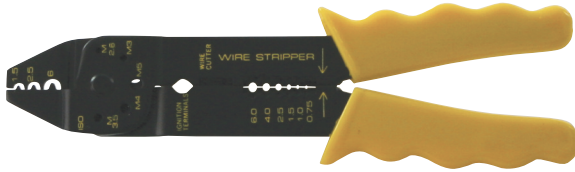
RIGHT ANGLE

Size range 10 to 1000mm²
With palm 90° angle to barrel.

All dimensions in mm

COPPER TERMINALS

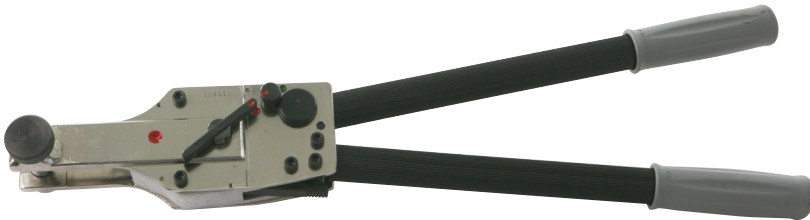
COMPRESSION TOOLS



KT2 - 1.5 to 6mm²
Simple service pliers incorporating wire stripper and cutter.



KT13 - 1.5 to 6mm²
KT17 - 10 to 16mm²
Precision ratchet tools ensuring a full crimp.



KT23 - 6 to 240mm²
Rugged mechanical rack and pinion multi-stroke tool with ratchet control. Six hexagonal die sets are required for full range. See tooling chart.



KT24 - 6 to 150mm²
Lightweight, but sturdy mechanical tool, ideal for crimping terminals with limited access. Three hexagonal die sets are required for full range. See tooling chart.



KT25 - 10 to 95mm²
Versatile lightweight tool with fine screw adjusted dies providing indent crimp.



KHH13C - 10 to 400mm²
Hand hydraulic tool with multi-stroke action. Thirteen hexagonal die sets are required for full range. See tooling chart.

All dimensions in mm

COPPER TERMINALS



COMPRESSION TOOLS



KFH13C - 10 to 400mm²

Consists of KV13C crimping head and KHFP2 Foot Pump plus connecting hose. Thirteen hexagonal die sets are required for full range. See tooling chart.

KFH23H - 10 to 630mm²

Consists of KV23H crimping head and KHFP2 Foot Pump plus connecting hose. Fifteen hexagonal die sets are required for full range. Adaptors required for sizes 10 to 400mm². See tooling chart.

TOOLING SELECTION CHART FOR STANDARD COPPER CONDUCTORS

CABLE AREA mm ²	HAND PLIERS KT2	HAND RATCHET TOOLS		LARGE RATCHET TOOLS			LARGE HAND TOOL KT25	HAND OR FOOT HYDRAULIC TOOLS	
		KT13	KT17	KT22	KT23	KT24		KV13C or KHH13C	KV23H
1.5	OK	OK							
2.5	OK	OK							
4	OK	OK							
6	OK	OK			23C 240-6	24C 6-10-70-95			
10			OK	OK	23C 185-10	24C 6-10-70-95	OK	13C10	*13C10
16			OK	OK	23C 120-16	24C 16-25-35-50	OK	13C16	*13C16
25				OK	23C 95-25	24C 16-25-35-50	OK	13C25	*13C25
35				OK	23C 70-35	24C 16-25-35-50	OK	13C35	*13C35
50				OK	23C 150-50	24C 16-25-35-50	OK	13C50	*13C50
70				OK	23C 70-35	24C 6-10-70-95	OK	13C70	*13C70
95					23C 95-25	24C 6-10-70-95	OK	13C95	*13C95
120					23C 120-16	24C 120-150		13C120	*13C120
150					23C 150-50	24C 120-150		13C150	*13C150
185					23C 185-10			13C185	*13C185
240					23C 240-6			13C240	*13C240
300								13C300	*13C300
400								13C400	*13C400
500									V23H 500
630									V23H 630
800								Consult Kompress	
1000								Consult Kompress	

Chart shows Die Part Number for given tooling type

*Requires adaptor V23H TA/BA

OK indicates suitable tool with Integral Die

For non Standard conductors consult Kompress

NOTES

While every effort has been made to ensure that the information contained in this catalogue is accurate, Kompress reserves the right to amend the size and specifications of its products in line with its policy of continuing improvement and development.

All dimensions in mm